

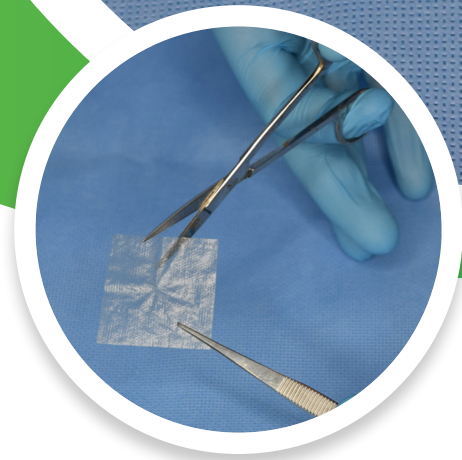
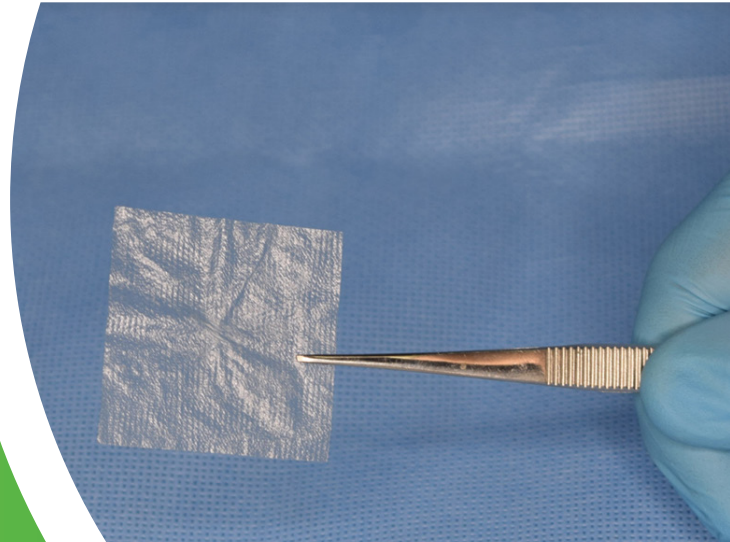
Axolotl DualGraft™

Indicated as a wound covering and structural barrier

Processed through minimally manipulated techniques **designed to retain the qualities of the native ECM**

Simplified application | Processed with **epithelial surfaces facing outwards**

**NATURAL
EFFICIENT
EFFECTIVE**



Evidence supporting the use of Amnion

The Extracellular Matrix (ECM)

3-D structure & essential component in all human tissues that aids in: Cellular adherence | Tissue anchoring
Cellular signaling | Recruitment of cells¹

ECM contributes to:

Formation of granulation tissue | Germination of new blood vessels | Maintaining viability of new tissue²

Human Amniotic Membrane (hAM)

Surgical recommendations are for application of hAM epithelial side against the wound^{3,4,5}



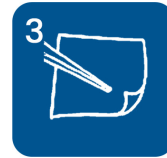
Axolotl DualGraft™ Application



1
Open box, remove outer tray. Open the outer tray and remove the inner tray (the inner tray is sterile and may be placed onto the sterile field). Open the inner tray and remove the Axolotl DualGraft package.



2
Using sterile scissors, cut open the package and remove Axolotl DualGraft.



3
Apply Axolotl DualGraft directly to the area of interest. Secure Axolotl DualGraft with sutures, glue, or steri-strips if desired, based on physician preference. Cover graft with a wide meshed non-adherent dressing (Adaptic). Use a bolster dressing such as gauze if necessary to fill dead space.



STORAGE
Stored at **ambient temperature**



PRESERVATION METHOD
Terminal irradiation gives the membrane a **5-year shelf life**.



CONTAINS ESSENTIAL PROTEINS & GROWTH FACTORS
Proteins found in Axolotl DualGraft™ include:
• Collagen I, III, IV, V and VII
• Fibronectin

SKU	DESCRIPTION	SIZE	Q CODE
ADG12	Axolotl DualGraft™	1x2	Q4332
ADG22	Axolotl DualGraft™	2x2	Q4332
ADG24	Axolotl DualGraft™	2x4	Q4332
ADG44	Axolotl DualGraft™	4x4	Q4332
ADG46	Axolotl DualGraft™	4x6	Q4332
ADG48	Axolotl DualGraft™	4x8	Q4332
ADG1010	Axolotl DualGraft™	10x10	Q4332

Axolotl DualGraft has received a positive recommendation from the FDA Tissue Review Group (TRG) and is manufactured in an AATB accredited facility.